

DYNAUDIO

Control Link Getting Started Guide

Table of contents

- Control Link Monitor Operating Module 4
 - Important safety information 5
 - Service 6
 - General Description 7
 - Before You Start 8
 - Connections 9
 - Network Port 9
 - Power Input 9
 - GPI Input 10
- Operation. 11
 - Configuration. 12
 - Connecting the Control Link 12
 - Adding the Control Link to a Monitor Profile 13
 - Programming the Keys. 15
- Specifications 18
 - Network Interface Specifications. 18
 - Electrical Specifications 18
 - Mechanical Specifications 18
 - Environmental Specifications 18
 - EMC Compliance 18



Dynaudio Control Link

Control Link Monitor Operating Module

Important safety information

READ AND KEEP THESE INSTRUCTIONS



WARNING

When using electric products, basic precautions should be followed, including the following:

Read all safety and installation instructions and explanations of graphic symbols before using the product.

Service

Do not attempt to service the product beyond that described in the user maintenance instructions. All other servicing should be referred to qualified service personnel.

The product should be serviced by qualified service personnel when:

1. Objects have fallen, or liquid has spilled into the product, or
2. The product has been exposed to rain, or
3. The product does not appear to be operating normally or exhibits a marked change in performance, or
4. The product has been dropped, or the enclosure damaged.

© Dynaudio, All Rights Reserved

All trademarks are recognized as the property of their respective owners.

General Description

Congratulations, and thank you for purchasing the Control Link Monitor Operating Module.

The Control Link is a versatile remote control for the Pro Mon 3 monitor controller software for the Dynaudio Control 01 and 02. It provides remote control of nearly all operations you need to take advantage of the features of the Dynaudio Control 01 and 02 in a small, discreet form factor that will fit comfortably on your console or workstation with a single POE connection.

Multiple Control Links may be used in the same system if multi-user functionality is required. The Control Link may also be used in combination with Eucon-based control surfaces such as the S6, Pro Tools Dock, and the Pro Tools Control app.

The Control Link has 10 user-definable keys in four layers. This effectively provides up to 40 user-definable keys by having 10 keys on each layer. The Control Link also features an external GPI input that can be used, e.g., to attach a footswitch for talkback.

Before You Start

Place the Control Link on a hard and dry surface.

Make sure you have installed the configuration and operation software DADman version 5.2 or higher on your computer. The DADman software can be downloaded here: <https://dynaudio.com/>.

Connections

The Control Link has three connections on the back:

- A network port with PoE (Power over Ethernet) with an RJ45 connector
- A 5 VDC power input with a DC connector
- A GPI input for an external switch (such as a footswitch) with a 3.5 mm mini jack connector



Figure 1: Connections on Control Link

Network Port

The network port is used for the control communication. The network port also supports Power over Ethernet (PoE), so the Control Link can be powered via the network connection if your network switch also supports PoE. In that case, it is not necessary to use the 5 VDC power input.

Power Input

If you do not use PoE to power the Control Link, you must use the 5 VDC power input with the supplied power adapter. The power adapter comes with a range of interchangeable mains plugs, making it suitable for use in most countries.



Figure 2: Power adapter kit included with Control Link

GPI Input

The GPI input is a 3.5 mm jack connector. This may be used to connect an external switch, such as a footswitch. The functionality of the GPI input is programmed in the DADman software.

Operation

The Control Link has 10 user-definable keys, a Layer key, and a rotary dial. The 10 user-definable keys can be programmed for any function in the monitor profile and are therefore not restricted to the functionality implied by the labelling on the Control Link. You can use the Layer key to switch between up to 4 layers with 10 keys each, thereby effectively providing up to 40 user-definable keys.

The rotary dial is typically used to control the monitor level but may also be configured to adjust other levels. Around the rotary dial is an LED scale from -40 dB to +12 dB, indicating the current level in 2 dB steps.

The LEDs can be red, green, or orange. The LED colours indicate levels *between* the 2 dB steps.

- A red LED indicates that the level is set to the exact value indicated next to the LED, e.g., -10 dB.
- If you slowly turn the rotary dial, e.g., clockwise to increase the level, the LED changes to green. At the same time, the next LED turns orange to indicate a change of 0.5 dB – so the level is now -9.5 dB.
- Continuing to turn the dial will make both LEDs turn to orange to indicate the level has now changed by 1 dB – so it is now -9 dB.
- Next, the LEDs will change to orange and green to indicate another 0.5 dB change – so the level is -8.5 dB.
- Finally, the LED next to -8 dB is red to indicate a level of -8 dB.



Figure 3: Control Link front view

Configuration

The Control Link is configured with the DADman software version 5.2 or higher. The following instructions assume you are already familiar with the DADman software. If you are not, please refer to the Control 01/02 User Guide to familiarise yourself with the software.

Please follow these steps to configure the Control Link.

Connecting the Control Link

Connect the Control Link to the network and ensure it is powered via PoE or the power adapter. The Status LED will blink red after approximately 2 seconds.

In the DADman software, go to the Device List. The Control Link should be detected automatically by the DADman software. If not, click “Refresh”.

The Control Link will be shown as “710” in the “Unit Type” column.

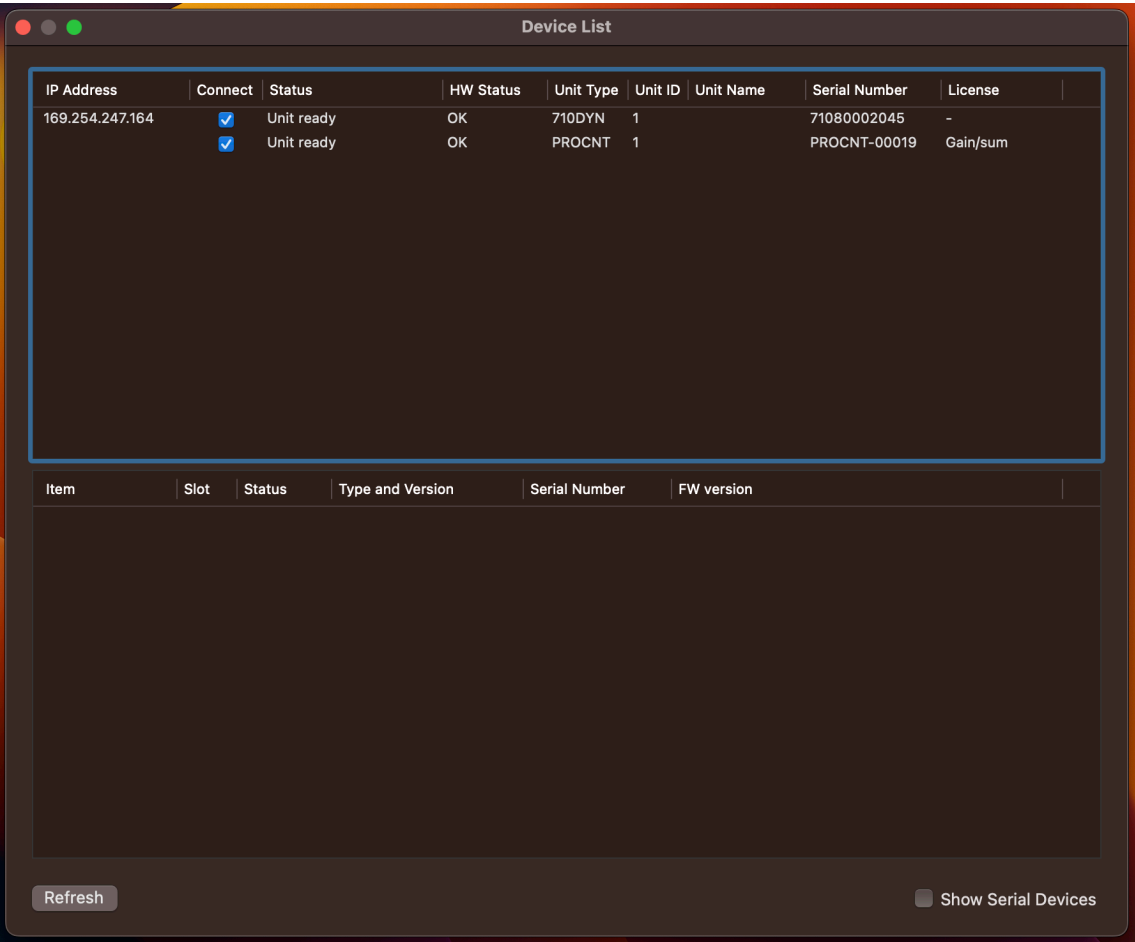


Figure 4: DADMan software Device List showing Control Link and Control 01

Ensure the Control Link’s IP address is within a valid range. Select the Control Link by checking the box in the “Connect” column and close the window.

Adding the Control Link to a Monitor Profile

The next step is to either load an existing monitor profile or create a new one.

If you already have a monitor profile, simply load it and go to the Monitor Profile Configuration section. If you have not already created a monitor profile, you must go to the Monitor Profile Configuration section and create one. Once you have done that, you should see something like this:

[illegible]

Figure 5: Monitor Profile Configuration section of the DADMan software

Now select the “Mom” tab.

[illegible]

Figure 6: Monitor Profile Configuration – “Mom” tab

Right-click (Windows) or CTRL-Click (macOS) in the white area to the left. Select "Add new Control Link" and then select the Control Link you want to add.

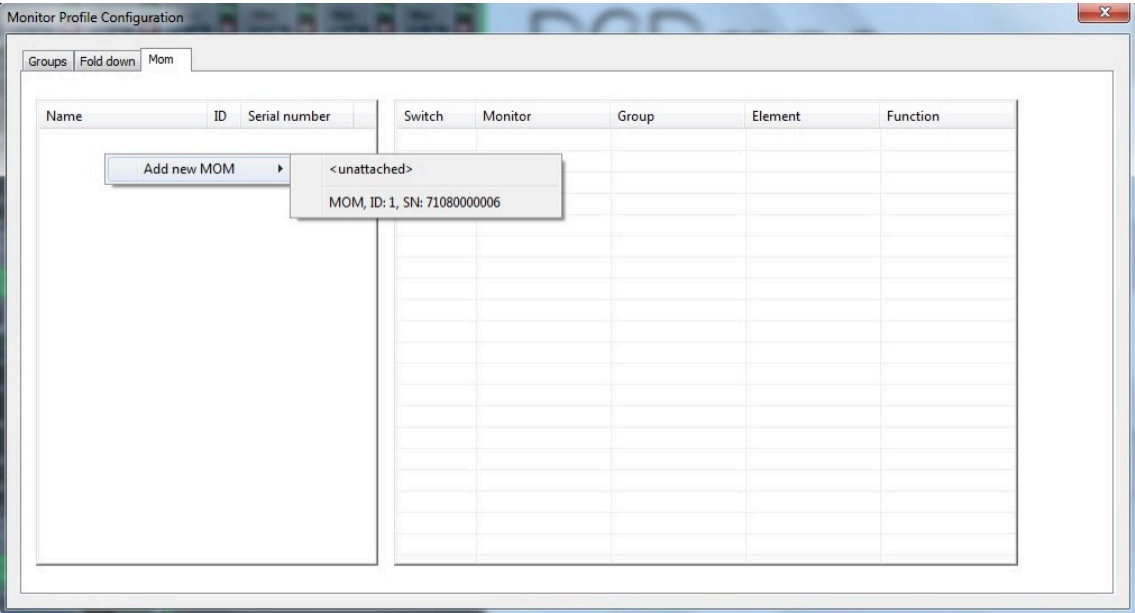


Figure 7: Adding a Control Link

The Control Link should now be shown in the white area.

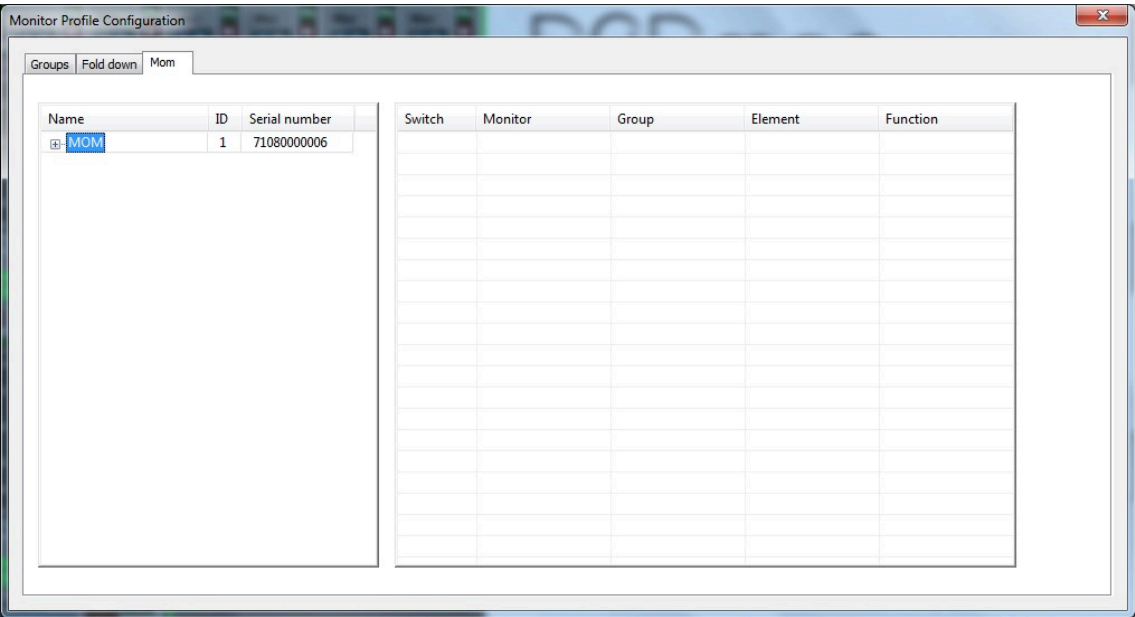


Figure 8: Adding a Control Link

Programming the Keys

Clicking on the small “+” sign next to the Control Link will show the four layers of the Control Link. Click a layer to see a list of all the keys on the Control Link.

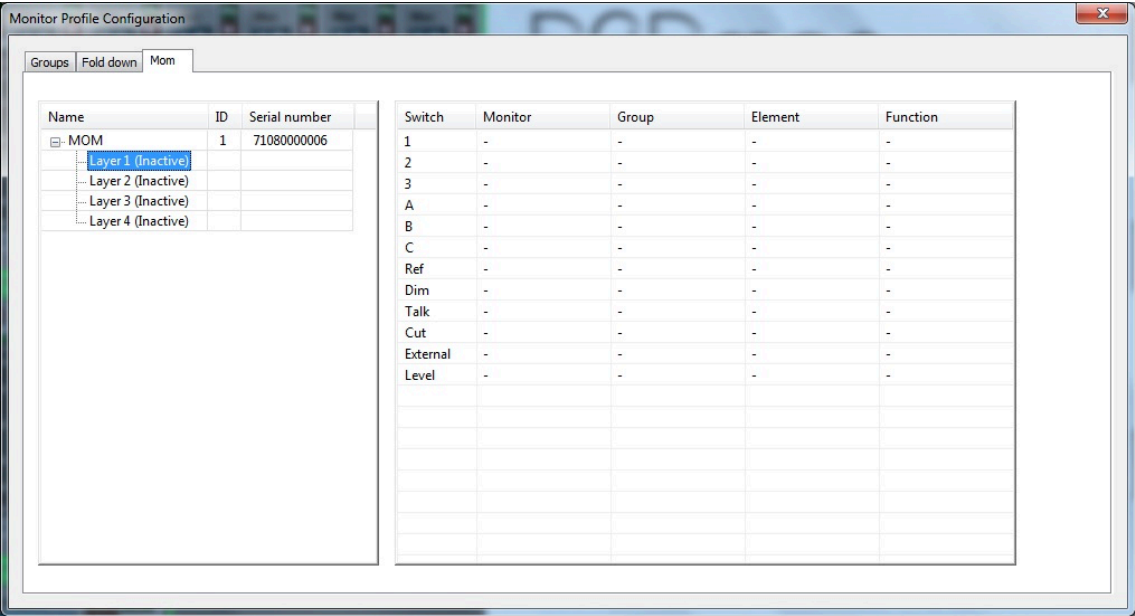


Figure 9: Keys on the Control Link for Layer 1

If you right-click on the Control Link, you will see the following options:

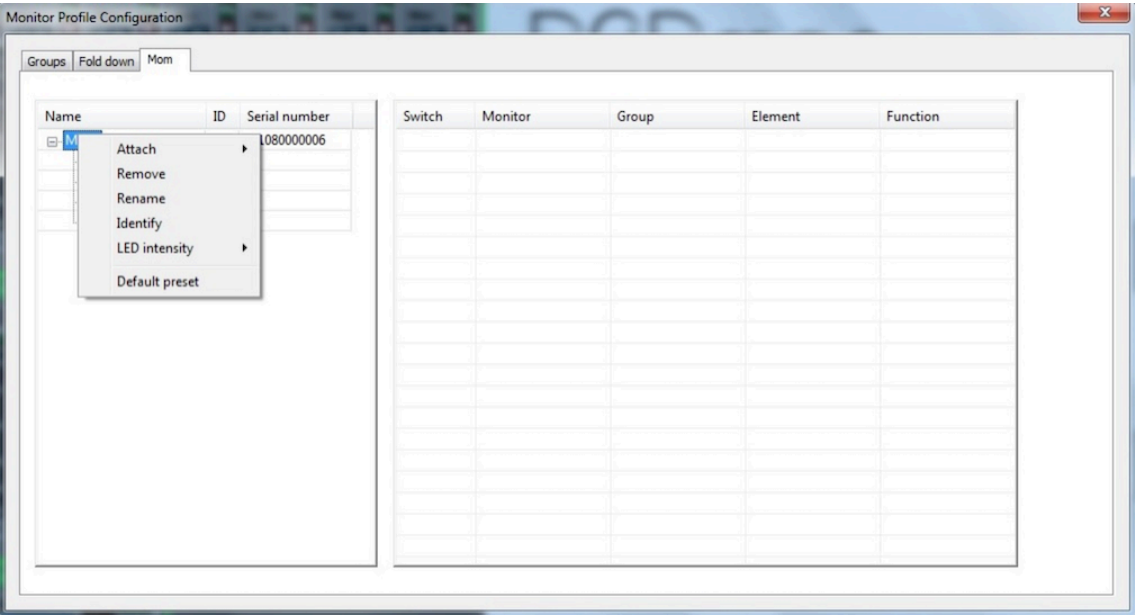


Figure 10: Context menu for programming the Control Link

The right-click menu has the following options:

- “Attach” allows you to add more Control Links.

- "Remove" will remove the selected Control Link from the configuration.
- "Rename" lets you rename the selected Control Link for easier identification in the configuration.
- If you select "Identify", all LEDs of the selected Control Link will light up in green for 10 seconds, allowing you to identify a specific Control Link if you have more than one in your system.
- "LED Intensity" lets you set the lighting level of the Control Link keys and LEDs to either "Low", "Normal", or "High" to adapt them to the lighting conditions in the room where the Control Link used.
- "Default Preset" will make the DADman software configure the functionality of the Control Link based on the monitor profile. This is done on a "best effort" basis, so it may not be perfect, but it can be a good starting point. You can always modify the configuration.

Assigning/reassigning a key is done by simply right-clicking or CTRL-clicking the entry for a key. This will bring up a list of choices, including the monitor groups you have programmed in the monitor profile. Pointing the mouse cursor at a monitor group displays its options. Select the functionality you want and then proceed to the next key.

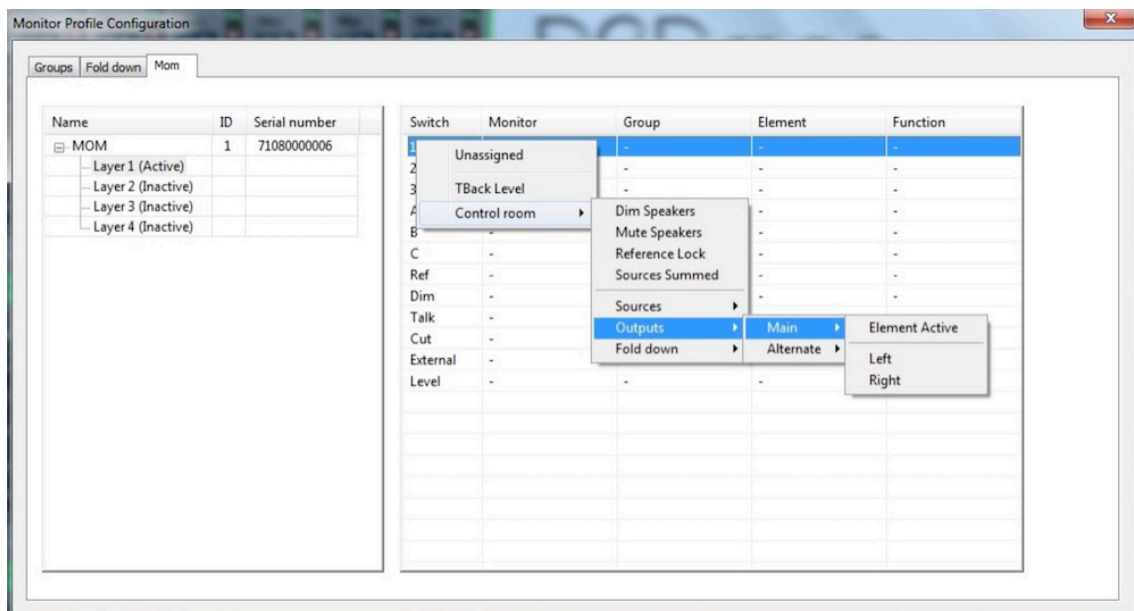


Figure 11: Assigning a functionality to a key

Finally, you need to activate the layer(s) you want to use. Right-click/CTRL-click on a layer and select "Active" to activate this layer.

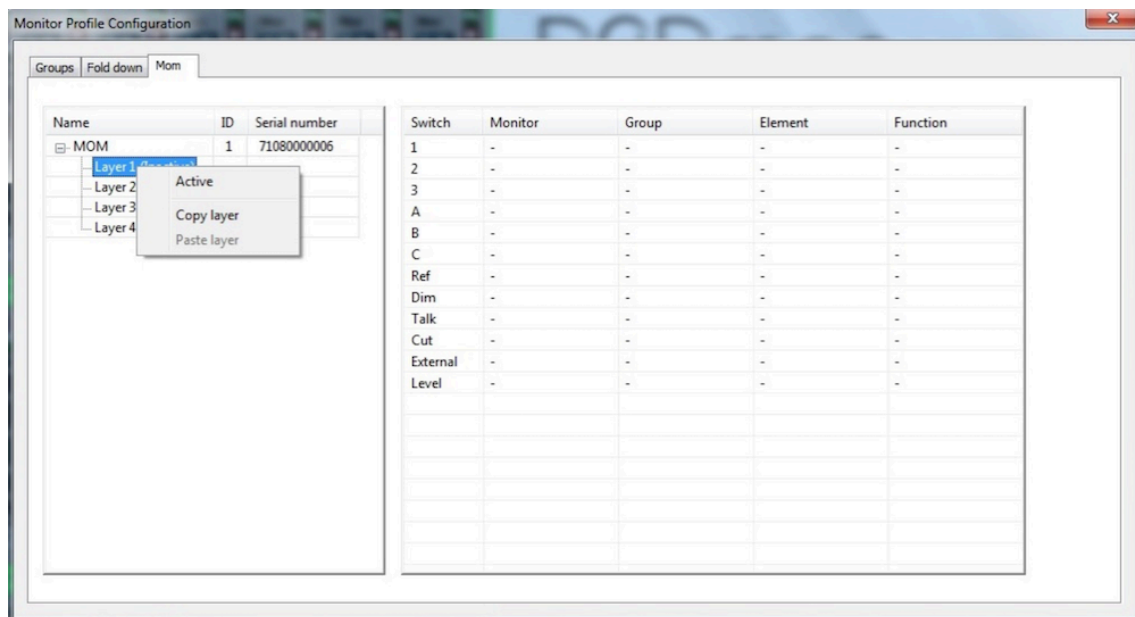


Figure 12: Activating a Control Link layer

This menu also provides copy and paste functions that let you copy the programming of a layer to another layer, and even to a layer in a different Control Link. This allows for the quick setup of multiple Control Links using the same configuration.

Specifications

Network Interface Specifications

Interface	1000BASE-T, RJ45 connector, 4-pair connection
PoE	According to IEEE 802-3af, Class 0
Foot switch	3.5 mm mini jack
DC power input	5.5 mm / 2.1 mm DC connector. Tip is +5V

Electrical Specifications

Power consumption	5 W maximum
Input voltage	PoE or 5 DVC

Mechanical Specifications

Dimensions (W x D x H)	17.2 x 11 x 5 cm (6.8 x 4.3 x 2 inches)
Weight	1 kg / 2.2 lbs.

Environmental Specifications

Operating Temperature	0 to 45° C / 32 to 113° F
Humidity	20 to 85%, non-condensing

EMC Compliance

- EN 55103-1, part 1: emission
- EN 55103-2, part 2: Immunity
- FCC 47 CFR part 15 (B): emission

🕒 2025-11-28